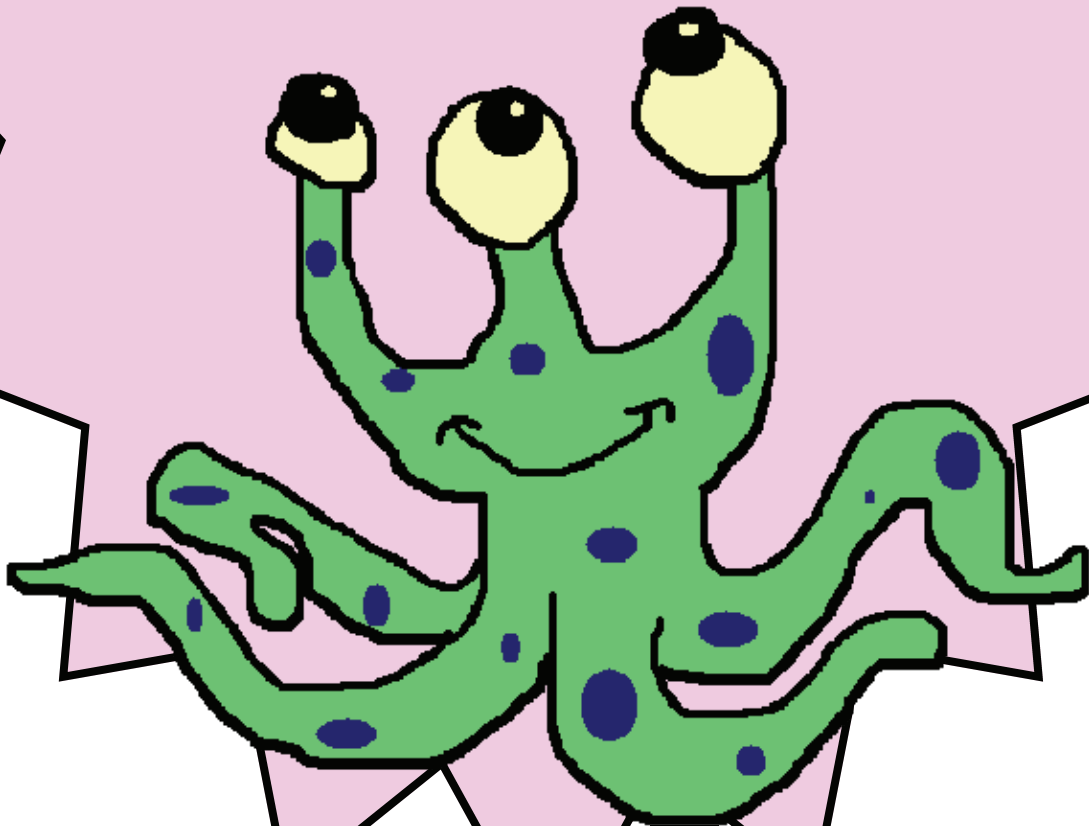
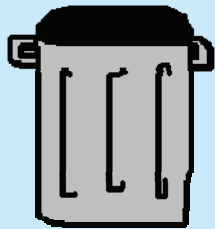


read  
EVERY  
CHOICE



GET RID

of answers that



DON'T

MAKE

SENSE

Watch for

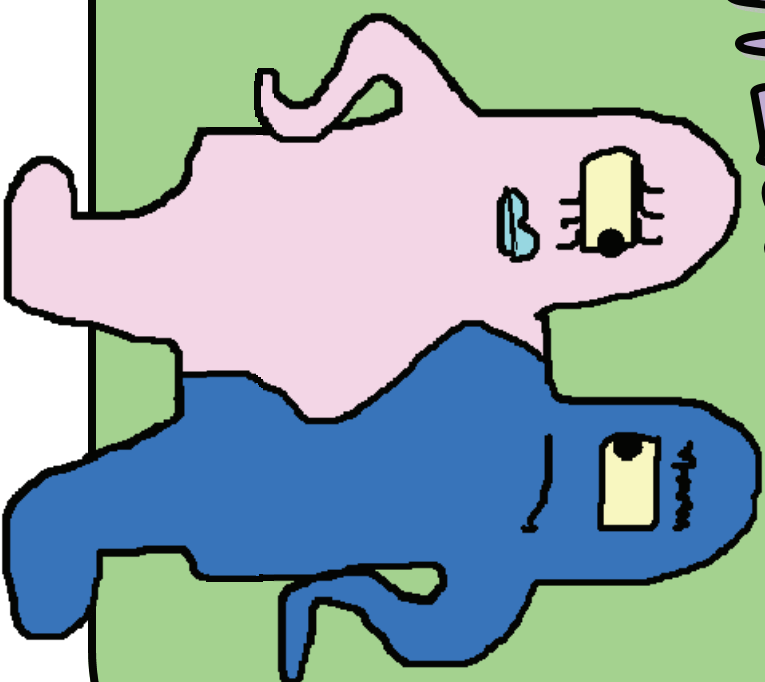
OPPOSITE ANSWER CHOICES

one is probably

correct

one is probably

a trick



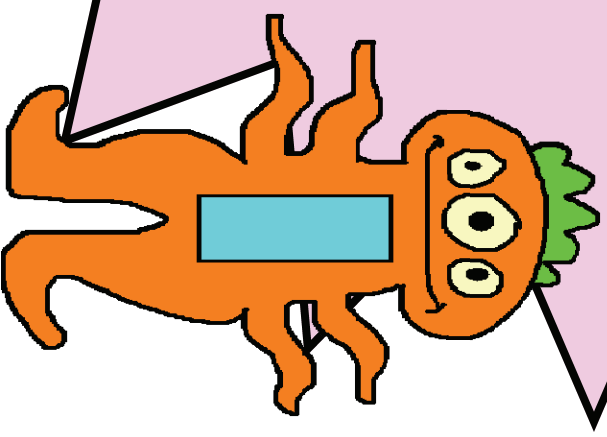
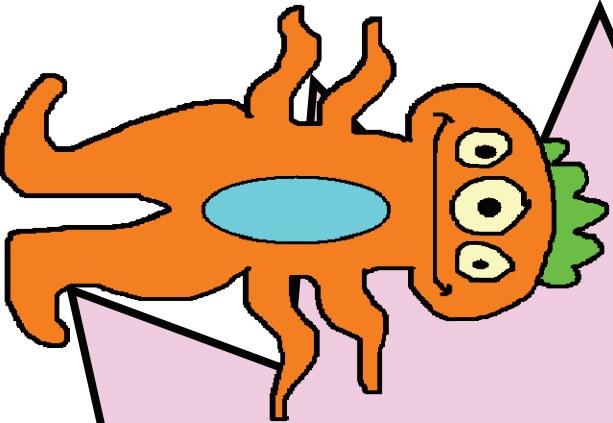
# Look for SIMILAR ANSWER CHOICES

one is probably

**RIGHT**

one is probably

**A TRICK**



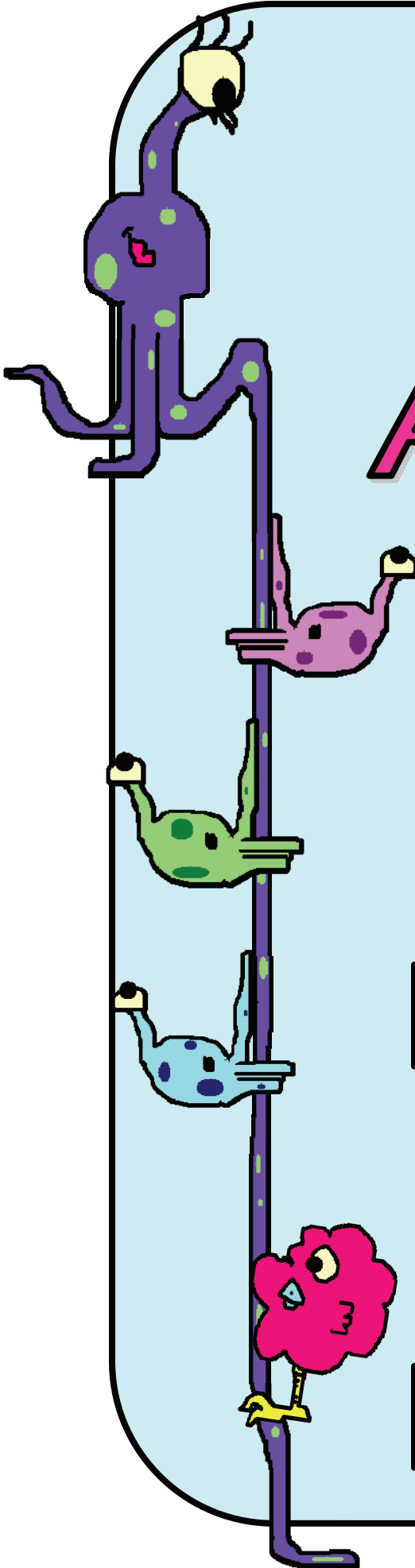
"ALL  
of the  
ABOVE"

means

MORE THAN ONE  
answer is  
DEFINITELY TRUE

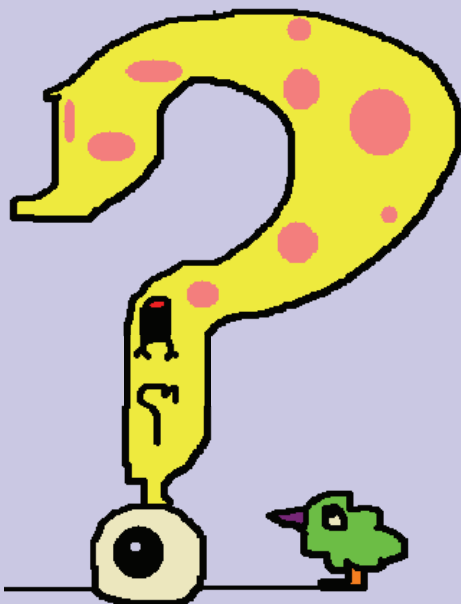
---

NO ANSWERS  
are  
DEFINITELY FALSE



is the  
WHOLE

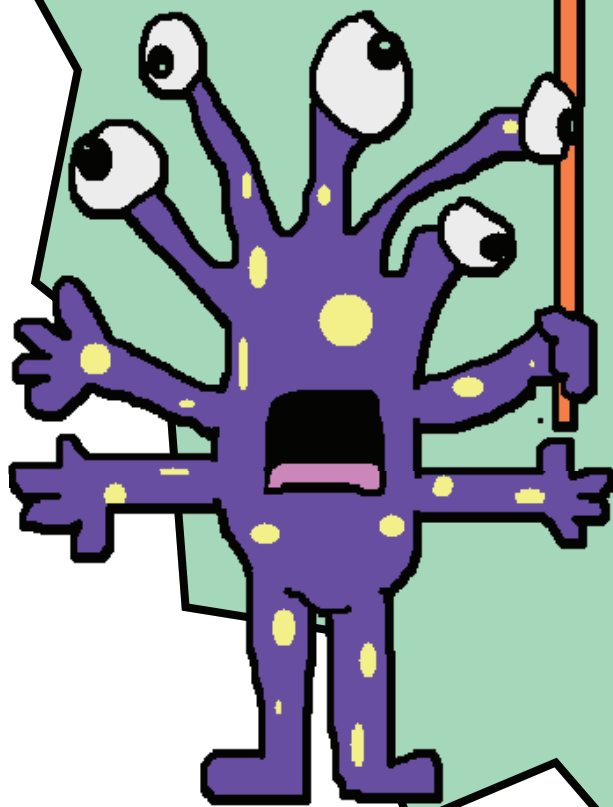
statement true,  
or only part of it





**BEWARE**

**of  
EXTREME  
WORDS**



**always never must  
completely only**